

**NEW!**  
More on reverse

# Non-Metallic Split Wall Plates

*Versatile • Accommodates Pre-connectorized Low Voltage Cable*



**Two-gang CESP2**  
1.250" bushing installed

**Single-gang CESP1**  
.312" bushing installed

Arlington's non-metallic **Split Wall Plates** provide a simple yet effective way to accommodate pre-connectorized low voltage cable(s) of varying size and quantity. They work with pre-existing low voltage cables too.

Our versatile single- and two-gang split wall plates come with multiple grommets that effectively size and cover the hole or opening in drywall.



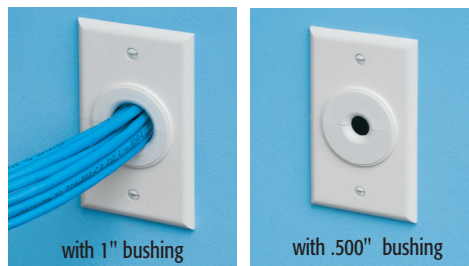
## Two-Gang CESP2



No bushing, 2" opening

with .750" bushing

## Single Gang CESP1

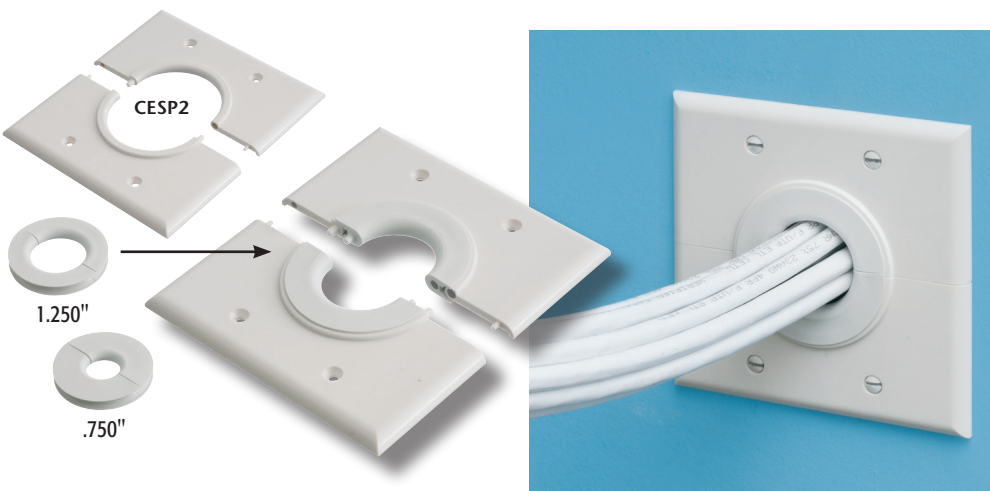


with 1" bushing

with .500" bushing

Use them as shipped – with a 1-1/2" opening in the single gang **CESP1**, and a 2" opening in the two-gang **CESP2**. Or add one of the supplied bushings to alter the size of the opening.

- **Single gang CESP1** has 1-1/2" opening. Comes with (3) bushings for .312" • .500" • 1" openings
- **Two-gang CESP2** has 2" opening and comes with (2) bushings for .750" • 1.250" openings



Patent pending



Catalog Number	UPC/DEI/NAED Mfg. #018997	Description	Unit/Std Pkg
<b>CESP1</b>	99339	Single gang plate, 1-1/2" opening w/ (3) bushings: .312" • .500" • 1"	1/10
<b>CESP2</b>	99340	Two-gang plate, 2" opening w/ (2) bushings: .75" • 1.250"	1/10



## Arlington®

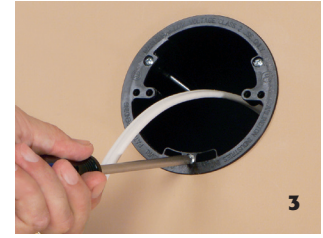
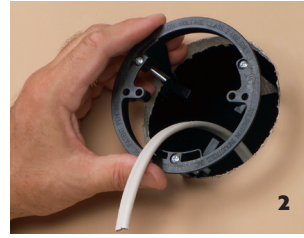
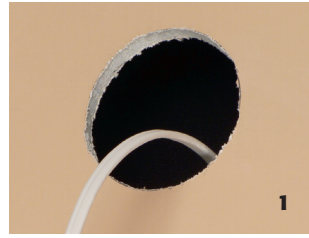
1 Stauffer Industrial Park  
Scranton, PA 18517  
800/233.4717 • Fax 570/562.0646  
www.aifittings.com

# NON-METALLIC Low Voltage Mounting Brackets

For Class 2 Wiring in EXISTING CONSTRUCTION

## Round LVR1 for Low Voltage Smoke Detectors and more

- Adjusts to fit 1/4" to 1-1/2" wall or ceiling thickness
- Bracket is its own template for cut out
- UL/CSA Listed



## Fast, Easy Installation

- 1 Trace bracket along *inside* diameter. Cut hole along *outside* of line. Pull wires.
- 2 Insert bracket into opening.
- 3 Tighten three screws to set LVR1 wings securely against drywall.
- 4 Attach low voltage smoke detector to LVR1 through screw holes in mounting plate.
- 5 Attach smoke detector cover.

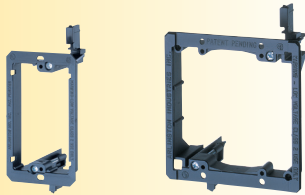


LVR1 Mounts Vertical on Wall... or Horizontal on Ceiling

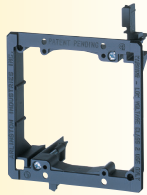
## NON-METALLIC



## Low Voltage Mounting Brackets



Single-gang  
LV1



Two-gang  
LV2

Catalog Number	UPC/DEI/NAED Mfg. #018997	Description	Adjusts to Fit Wall Thickness	Unit Pkg	Std Pkg
LV1	58175	Single-gang	1/4" to 1"	10	100
LV2	10952	Two-gang	1/4" to 1"	5	50
LV3	09600	Three-gang	1/4" to 1"	5	50
LV4	09601	Four-gang	1/4" to 1"	5	50
LVR1	58185	Round	1/4" to 1-1/2"	—	25
LV1LP	58177	Low profile, single-gang	1/2" to 5/8"	10	100
LV2LP	23102	Low profile, two-gang	1/2" to 5/8"	5	50



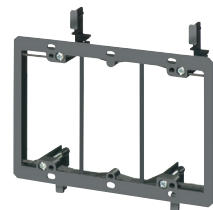
Round  
LVR1



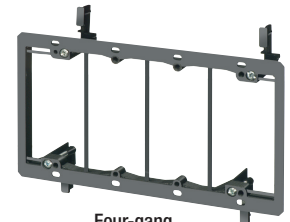
Single-gang  
Low profile  
LV1LP



Two-gang  
Low profile  
LV2LP



Three-gang  
LV3



Four-gang  
LV4



**Arlington**<sup>®</sup>

1 Stauffer Industrial Park  
Scranton, PA 18517  
800/233.4717 • Fax 570/562.0646  
www.aifittings.com

Distributed by

Patent ending Patented CESP 0924/25M LV1\_LV4\_LVR1\_LVLP 1107 REV 0923/25M