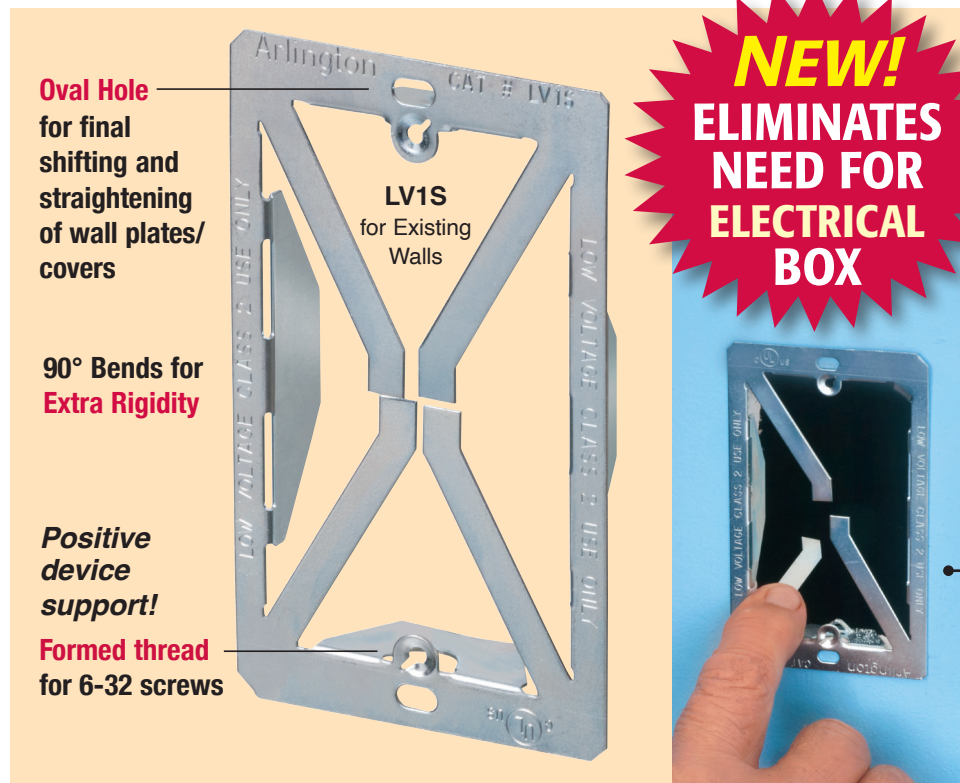


More on REVERSE

Plated STEEL Cut-in Mounting Bracket

Installs Low Voltage Class 2 wiring **WITHOUT AN ELECTRICAL BOX**



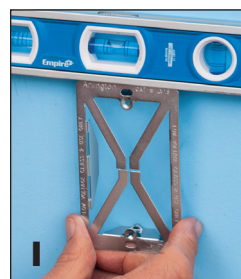
Arlington's Low Voltage Mounting Brackets are *the solution* for fast and easy cut-in installation and mounting of Class 2 communications, computer and cable TV wiring and connections.

Our **LV15 plated steel cut-in** mounting bracket, with its unique X-shaped bracket design, provides excellent stability and secure installation of low voltage devices and cable, in an existing wall – *without an electrical box.*

And, it's easy to install with a drywall saw and a screwdriver!

Unique, secure four-corner support on 1/4" to 1-1/4" walls

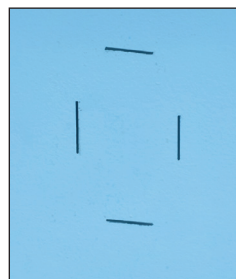
- Provides positive low voltage device support on formed thread for #6-32 screws
- Bracket is template for cut out
- cULus Listed



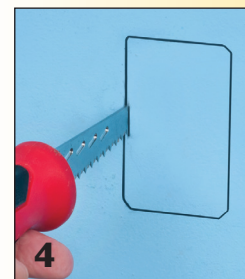
1 Determine bracket position on an existing wall, and level.



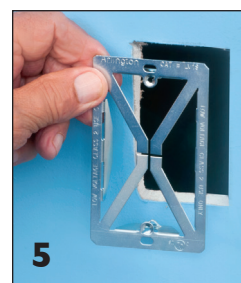
2 Bracket is template for the opening. Face out, trace the bracket along *inside* of bracket flange.



3 Turn bracket over. Use edge to complete tracing cutting guide.



4 Cut opening with drywall saw.



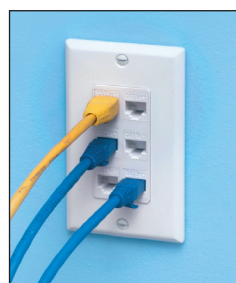
5 Insert bracket into opening.



6 Bend all four corner supports into hole and around drywall to set LV15 securely in opening.



7 Wire low voltage device.



Done!

Patent pending



Arlington®

1 Stauffer Industrial Park
Scranton, PA 18517
800/233.4717 • Fax 570/562.0646
www.aifittings.com

Catalog Number	UPC/DEI/NAED Mfg. #018997	Low Voltage Mounting Bracket	Adjusts to Fit Wall Thickness	Unit/Std Pkg
LV15	99325	Single-gang Plated Steel	1/4" to 1-1/4"	100



Heavy-Duty ZINC Cut-in Mounting Bracket

For Low Voltage Class 2 wiring in **COMMERCIAL CONSTRUCTION**

Arlington's Low Voltage Mounting Brackets are the time- and money-saving solution for faster and easier mounting of Class 2 communications, computer and cable TV wiring.

Designed to mount wall plates flush, our mounting brackets have features that deliver a better-looking, easy to install job – specially designed screw holes, a thin front lip and more.

For *existing* construction our **new single gang, ZINC cut-in mounting bracket**, offers extra rigidity compared to plastic or sheet metal cut-in brackets. Plus, it has threaded holes for easy, fast device installation.

- Bracket adjusts to fit wall board from 1/4" to 1" thick

- Bracket is the template for cut out. Level. Trace inside bracket. Cut opening.



- cULus Listed

Arlington also manufactures a variety of single-, two-, three- and four-gang **NON-METALLIC** low voltage brackets for new and old work, and others for specialty applications.

Patent pending



Arlington®

1 Stauffer Industrial Park
Scranton, PA 18517
800/233.4717 • Fax 570/562.0646
www.aifittings.com

NEW!
COMMERCIAL GRADE
EXTRA HEAVY DUTY

Sturdy
Non-bendable zinc

Save Time!
Threaded holes
for easy device installation

Mounting Wing Screws
hold bracket secure when
mounting screws are tightened



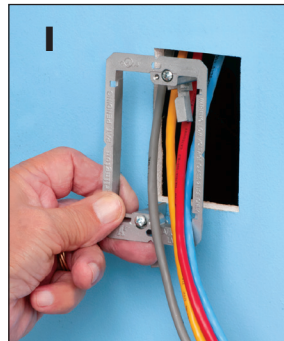
LV1M

Extra heavy-duty ZINC
for Existing Walls

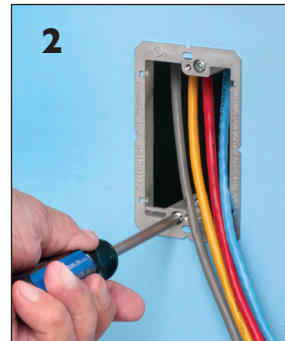
Oval Hole

allows final shifting, straightening of device

Better-looking, Faster Installation!



1 Trace bracket along *inside* of bracket. Cut hole along *outside* of line. Pull wires.



2 Insert bracket into opening. Tighten screws to set LV1M wings securely against drywall.



3 Install device through screw holes in bracket.



Catalog Number	UPC/DEI/NAED Mfg. #018997	Description	Adjusts to Fit Wall Thickness	Unit Pkg	Std Pkg
LV1M	12905	Single-gang Extra Heavy-duty Zinc Low Voltage Mounting Bracket	1/4" to 1"	10	100

Distributed by

Patent pending

LV1S_LV1M 0724/25M