

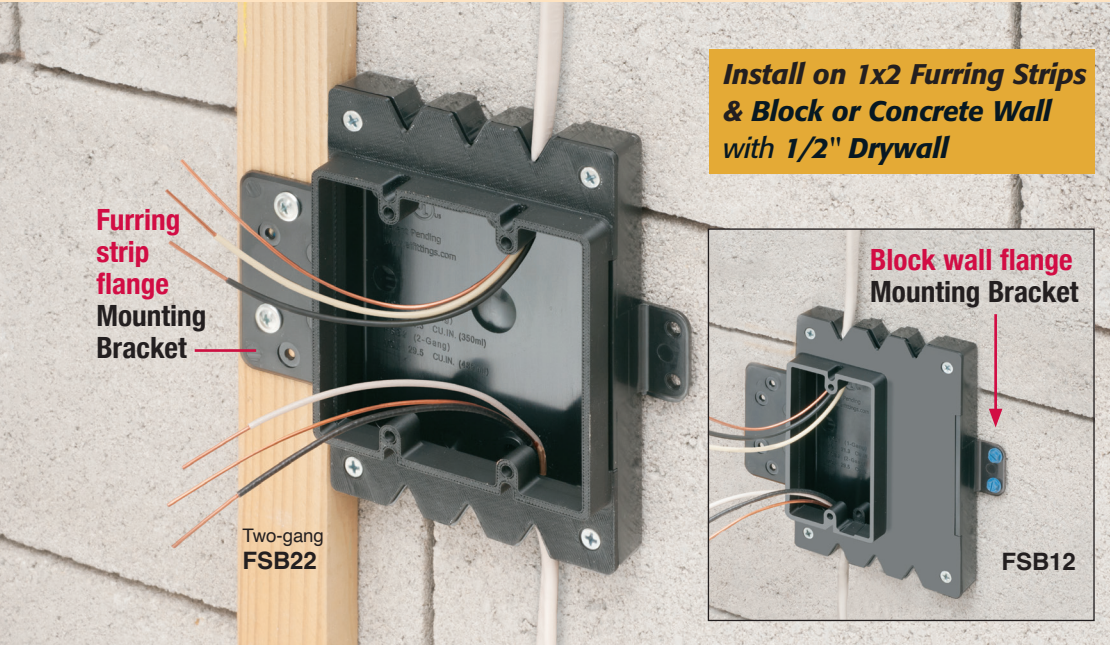
**NEW**

**NEW!**  
More on reverse

# Low Profile Furred Wall Box™ Use with Your Own Cover

Add Arlington Box Extenders for Broader Application and Use

## Base Assemblies for 1/2" Wall Thickness & Standard Depth Device



Install on 1x2 Furring Strips & Block or Concrete Wall with 1/2" Drywall

Furring strip flange Mounting Bracket

Block wall flange Mounting Bracket

Two-gang FSB22

FSB12

Arlington's **FSB version** Furred Wall Box™, saves time – and makes challenging outlet box installation easy!

These new **single** and **two-gang** low profile assemblies with 1/2" raised box covers combine with other Arlington products to offer installation solutions for varying wall thicknesses from 1/2" to 1-1/2" thick and varying device depths.

Designed for use with existing 1x2 drywall furring strips – FSB series outlet boxes can also be mounted on a concrete block wall *between furring strips* so installers can place the box/outlet where it's needed.

### Eliminates installation steps

#### Fast, easy installation

There's **NO NEED** to break out concrete block. **NO NEED** to install separate furring strips. And **NO NEED** to seal the block wall breakout and box.

- Integral cable securement and retention – No pullout!
- Accommodates standard and GFCI devices in varying depths – Uses standard decorator-style wall plates
- Box volume (cu. in.)  
Single gang FSB12 - 17.0 (280 ml)  
Two-gang FSB22 - 20.5 (336 ml)
- High strength –  
Withstands freeze/thaw cycles



Uses Standard Wall Plates

### Eliminates installation steps

- NO** new furring strips
- NO** wall break out
- NO** sealing hole

**SAVE**  
15 MINUTES  
and \$15.00<sup>1</sup>  
per BOX

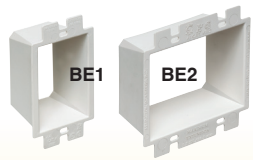
<sup>1</sup> \$60/hour fully burdened labor rate



Our **BOX EXTENDERS** broaden applications. See below for specific conditions.

### 1 Add Box Extenders

with this condition:



Overall Total Wall Layer Thickness **GREATER** than 1/2"

Example:  
3/4" thick layer  
(1/2" wallboard and 1/4" tile)



### 2 Add Surface Box Extenders

with these conditions:



- 1/2" Drywall
- Deep Depth Wiring Devices



Patent pending



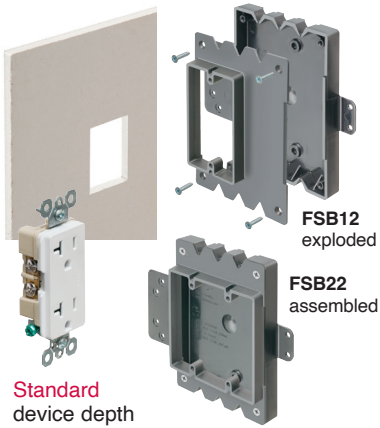
## Arlington®

1 Stauffer Industrial Park  
Scranton, PA 18517  
800/233.4717 • Fax 570/562.0646  
www.aifittings.com

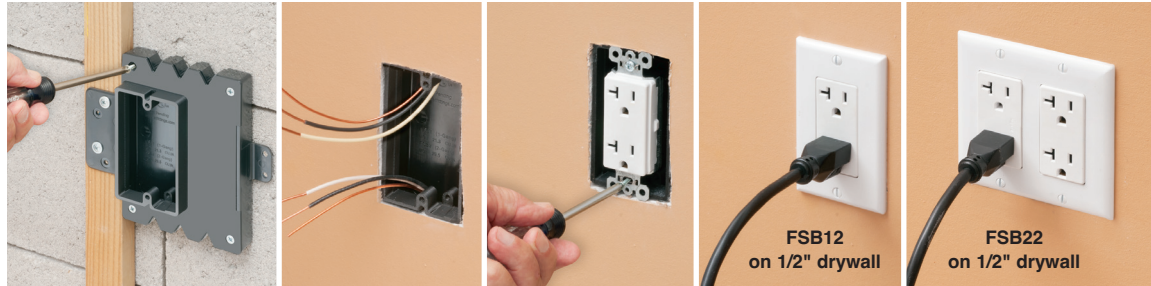
# Low Profile Furred Wall Box™ Use with Your Own Cover



## Add Arlington Box Extenders for Broader Application and Use



**FSB12 & FSB22 Base Assemblies** for 1/2" Wall Thickness & **STANDARD** Depth Device  
 Install on 1x2 Furring Strips and Block – or Concrete Wall with 1/2" Drywall



Add our **BOX EXTENDERS** for these specific conditions.

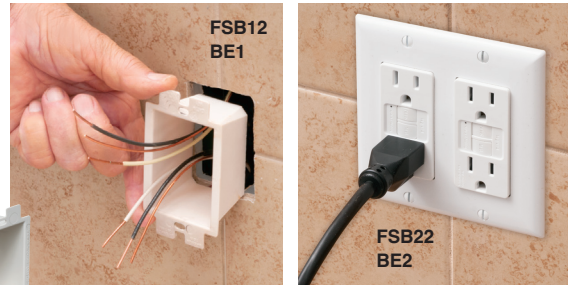
**1** Is Total Wall Layer Thickness

1/2" drywall + tile

**GREATER THAN 1/2"?**

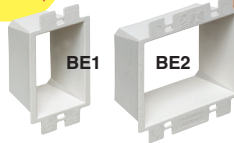
**YES**

Add BE1 or BE2



Wall Thickness **GREATER** than 1/2" up to 1-1/2"

**NO**



**2** Using a **Deep Depth Device?**

(GFCI, USB, Dimmer)

**YES**

Add BES1 or BES2

1/2" Wall Thickness • **DEEP** Device



**Arlington**®

1 Stauffer Industrial Park  
 Scranton, PA 18517

800/233.4717 • Fax 570/562.0646

www.aifittings.com

Catalog Number	UPC/DEI/NAED Mfg. #018997	Description Furred Wall Box Assembly • Box Extenders	Unit/Std Pkg
FSB12	99361	One-gang Furred Wall Box assembly w 1/2" raised cover	1/10
FSB22	99362	Two-gang Furred Wall Box assembly w 1/2" raised cover	1/10
BES1	48976	Single gang surface box extender	1/10
BES2	48977	Two-gang surface box extender	1/10
BE1	40160	Single gang box extender	25/25
BE2	48960	Two-gang box extender	25/25

FSB12 and FSB22 kits include (4) screws each

Distributed by



Patent pending

FSB12-22 0125/25M