

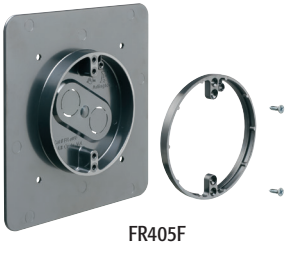
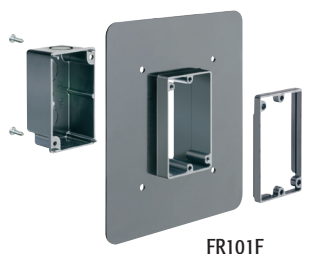
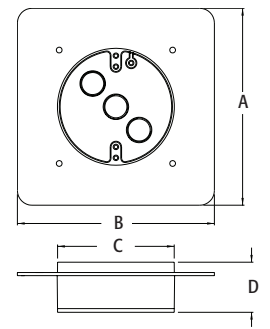
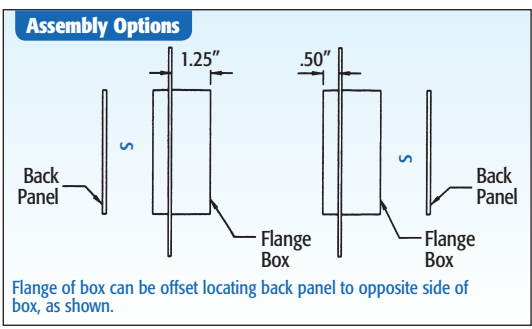


Non-metallic FR Series Device & Fixture Boxes

Extra-wide flanges prevent water and air intrusion, no need for gaskets or caulking. Use for mounting coach lights on stucco and/or flat siding. For new construction.

CATALOG NUMBER	UPC/DCI/NAED MFG #018997	APPLICATION	UNIT PKG	STD PKG	DIM A	DIM B	DIM C	DIM D
FR101F	12680	Device Box	10	10	7.875	7.125	3.750	3.525
FR405F	12681	Pan Box	10	10	6.750	6.750	4.000	1.375
FR420F	09615	Fixture Box	10	10	6.750	6.750	4.000	1.986

PATENTED.
 
 E170558 LR49636



For Help in Obtaining **ENERGY STAR** rating

Installation Instructions

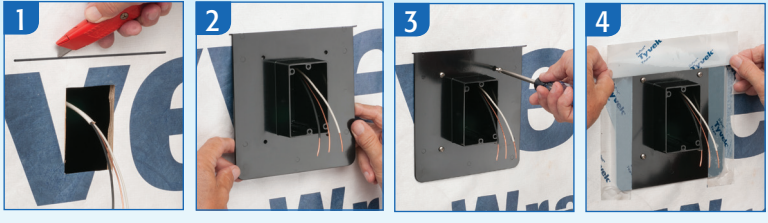


1 For 5/8" wall finish thickness, loosen two screws and remove back.
2 Re-install the back on the OPPOSITE side of the box.
3 Assembled for 5/8" finish thickness.
4 For 7/8" wall finish thickness, install the 1/4" extension ring
5 ...to the front of the box.

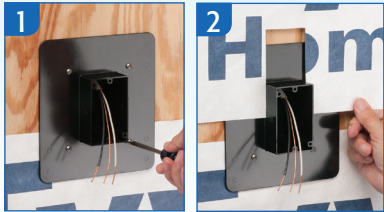
FEATURES AND BENEFITS

- Converts FAST for use on any cladding system up to 1-7/8"!
- Ships pre-assembled, ready for use with 1-3/8" finish or cladding thicknesses
- Easily converts for 5/8" finish thicknesses by removing back and reinstalling on the opposite side
- Add extension ring for 7/8" thickness
- Extra-wide flanges help meet the International Energy Conservation Code by creating a protective barrier against air and water infiltration. No gaskets or caulking required.
- Large 20 cubic inch volume
- Made of high strength polycarbonate
- Wall mount – one-piece design for new installations
- Up to a 10 lb. fixture rating

For New Construction
 Install FR series box BEFORE



or AFTER weather barrier house wrap



for Help in Maintaining **CONTINUOUS INSULATION** in foam sheathing applications